



guadalupe restoration project soil management area

background

- Property is a 2,800-acre former oil and gas production facility operated from 1949 to 1994 with approximately 240 oil producing wells and over 180 miles of pipeline.
- Remediation and restoration efforts for impacted soil and groundwater began in 1996.
- 1.36 million gallons of diluent have been recovered to date, and 1.11 million cubic yards of non-hazardous hydrocarbon affected soil have been removed and hauled to Santa Maria Regional Landfill since 2006.
- Approximately 260 surface acres have been remediated and restored or are under restoration, including 21 wetland restoration locations.

what's happening now

- There is ~1.85 million cubic yards of non-hazardous hydrocarbon affected soil left to manage
 - This volume requires 69,720 haul trucks (2,700,000 total miles) to transport offsite to the Santa Maria Regional Landfill
- Issues with current project:
 - Traffic/safety issues and infrastructure wear-and-tear
 - Air pollution/emissions (trucking offsite, trucking onsite, excavation, and stockpiling)



what's being proposed

Approximately 1.85 million cubic yards of non-hazardous hydrocarbon-affected soil would be managed onsite in an engineered Soil Management Area (SMA).

- Designed to exceed the CCR Title 27 requirements (double liner system)
- The proposed location is within a previously disturbed area that will undergo remediation and restoration
- Nearest residential/commercial/industrial development is ~2 miles away
- Only non-hazardous impacted soil as defined by the CCR Title 22 regulations will be placed within the SMA
- No on-site construction debris, household, or other waste will be placed within the SMA
- No off-site waste will be brought into the SMA



The proposed project would eliminate of over 69,000 haul truck round trips on public roadways, resolving the major issues with transporting offsite.

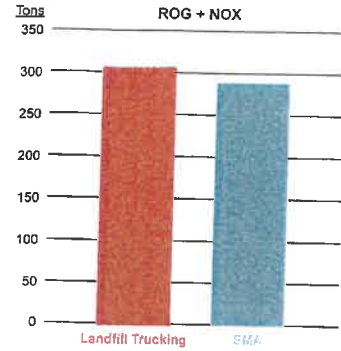



The proposed location for the SMA (highlighted in the yellow box above and at left) is 16.2 acres; less than 1% of the total property.

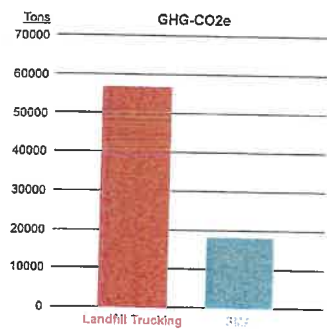
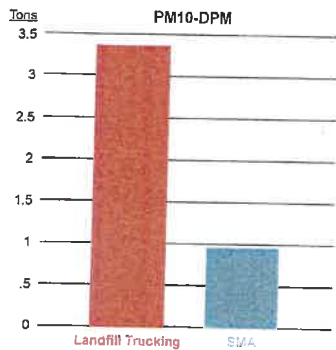
Continued on reverse.

benefits of the proposed project

- 69,720 fewer haul truck round trips on public roadways
- Greatly reduced air emissions:
 - Lower ROG and NOx Ozone Precursor emissions
 - 71% Lower Diesel Particulate Matter (DPM) emissions
 - 67% Lower Greenhouse Gas (GHG) emissions



Air emissions shown are total tons for 2021-2026 project period.



- The SMA is less than 1% of total property
- The SMA will be restored to match surrounding topography
- No negative impacts to wildlife
- No negative impacts to humans
- The SMA will be monitored in accordance to CCR Title 27 requirements (30+ years)
- Soil placed in the SMA will be amended with nutrients to enhance biodegradation process

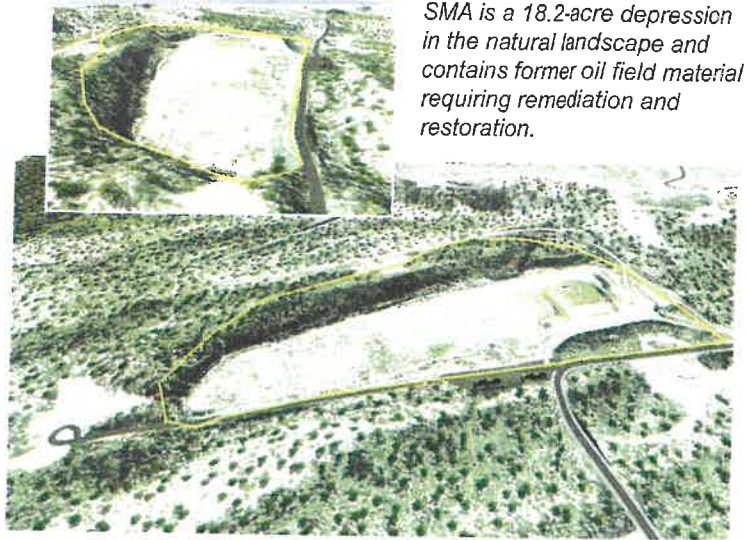


contact:

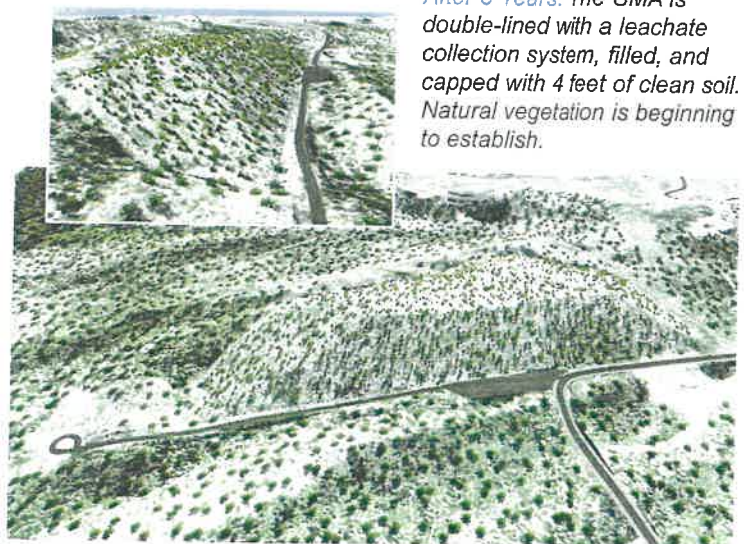
Danielle Wold
Project Manager

Chevron Environmental Management Company
2184 Thornberry Road
Guadalupe, California
805-347-3114
DanielleWold@Chevron.com

SMA looking forward



Present Day: The proposed SMA is a 18.2-acre depression in the natural landscape and contains former oil field material requiring remediation and restoration.



After 5 Years: The SMA is double-lined with a leachate collection system, filled, and capped with 4 feet of clean soil. Natural vegetation is beginning to establish.



After 10 Years: The SMA is fully restored and matches the surrounding undisturbed habitat as a result of the proven restoration program implemented at the Guadalupe Restoration Project.

COUNCIL MEMBER UPDATE

Santa Barbara County Association of Governments - (SBCAG) 10/17/19

Highlights:

Enhance Mobility of Seniors and Individuals with Disabilities – CAL-TRANS

Approved submittal of grant by **Smooth of \$320,300** to Cal Trans
Approved Submittal of grant by Easy Lift \$254,400 To Cal Trans
Caltrans submits to Federal Transit Administration request by spring of 2020 for funding

Local Transportation Funds (LTF) 2019-2020 - For Guadalupe \$365,823

For public transportation, street and road construction, and facilities for the exclusive use of pedestrian and bicyclists; Based on Population

SBCAG Budget – FY 2019-20 - \$32,135,990 – Measure A \$20,946,500

Measure A is a transportation measure that was approved by 79% of Santa Barbara County voters in November 2008. One-half percent sales tax. Measure A is administered by the Santa Barbara County Association of Governments (SBCAG) and will provide more than \$1 billion of estimated local sales tax revenues for transportation projects in Santa Barbara County from 4/1/2010 through 3/31/40.

Air Pollution Control District (APCD) Meeting

Notice of Violations County Wide:

- Verizon Wireless – Guadalupe 3 violations \$14,750
- Extensive Air Monitoring Equipment

Chevron – Guadalupe Restoration Project

- Hand-Out
- Open to having council/City Staff Visit Restoration Project
- \$100,000 per year to city, reduced to \$75,000 – Traffic Safety

Other Events

- **Mayors Ball - 1012/19 Benefiting UW North Santa Barbara Co.**
- **Barrio Filipino**
- **Kids Day in the Park**
- **Trunk or Treat - City Parking Lot 10/31/19**

16 Oct 19

To: Ariston D Julian, Mayor
Robert Perault, City Administrator
John McMillan, Bldg Official
Alma Hernandez, District Representative
Willie Galvan, American G I Forum

From: Ray Saenz, Director/Instructor

High Voltage Lineman Apprenticeship Academy Non-Profit

The purpose of this letter is to let the City of Guadalupe know, as requested, what my long term objectives are relating to my non-profit academy will encompass. I believe it is necessary to present some background information about my experience and goals.

I have been a high voltage lineman for forty plus years and I retired in 2016. As our adage goes – once a journeyman lineman; always a journeyman lineman. My experience is quite extensive and my safety record is impeccable. A few years ago South West Texas Junior College hired me as an instructor, thus I know the ramifications of what lies ahead in regards to training young men and women in this particular trade.

My students will know on their first day of instruction that you must fear electricity, because if you do not fear it you will never respect it, and if you never respect it, well electricity will soon make you comply.

There will be intense scrutiny of all applicants. Focus will be on character, integrity, attention to personal safety and safety of others, mechanical ability, and the intelligence to know when to listen.

Both male and female students must be high school graduates and be proficient in algebra. They must obtain a commercial driver license, must have one or both parents who are migrant workers currently working in the fields and qualify as low income. Veterans, male and female, must not be above the age of 25 years old and be honorably discharged. All applicants will have a clean DMV record and provide a certified letter from their physician asserting a clean bill of health.

Most important, every student will pay IBEW one year union dues in advance.

The academy will be structured in three months of comprehensive instruction. The first group of students will perhaps have a four month class. They will assist in setting up the yard and it will insure that I can have everything negotiated and then taper to a three month program.

Regarding Class A Commercial Driver License. My contact with the Santa Barbara County Workforce Development Board Career Services is Stephanie Rodriguez, Talent Development Specialist. There is coordinating which must be completed before students graduate. I am confident everything will be concluded in a timely and organized manner.

The foremost important subject will of course be safety in every aspect of this trade. I will include first aid, CPR, hurt lineman rescue and students will also train in inclement weather. There will definitely be training during hours of darkness and on weekends when necessary.

Allow me to emphasize training will include classroom and extensive study at home. Students will learn the Delta/Wye systems, both three phase and single phase phase circuitry to include vectoring, distribution and transmission, overhead and underground construction, troubleshooting, cable splicing, rope splicing, rigging etc. The students will be able to walk you through a substation, understand IBEW's safety manual and all pertinent governing regulations.

There is much to teach in this profession. After forty years of experience I do not know everything, however, my students will at the end of their training be able to pass the oral, written and physical exams with the necessary skills to confidently earn a position with any utility in the nation and abroad.

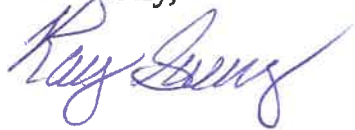
High voltage linemen/linewomen are very unique individuals. Often times not being appreciated for their sacrifices and endurance needed to keep the power on. They are for the most part, hard working and rigorously disciplined to overcome most occupational obstacles.

Linework is not a job! It is a career!

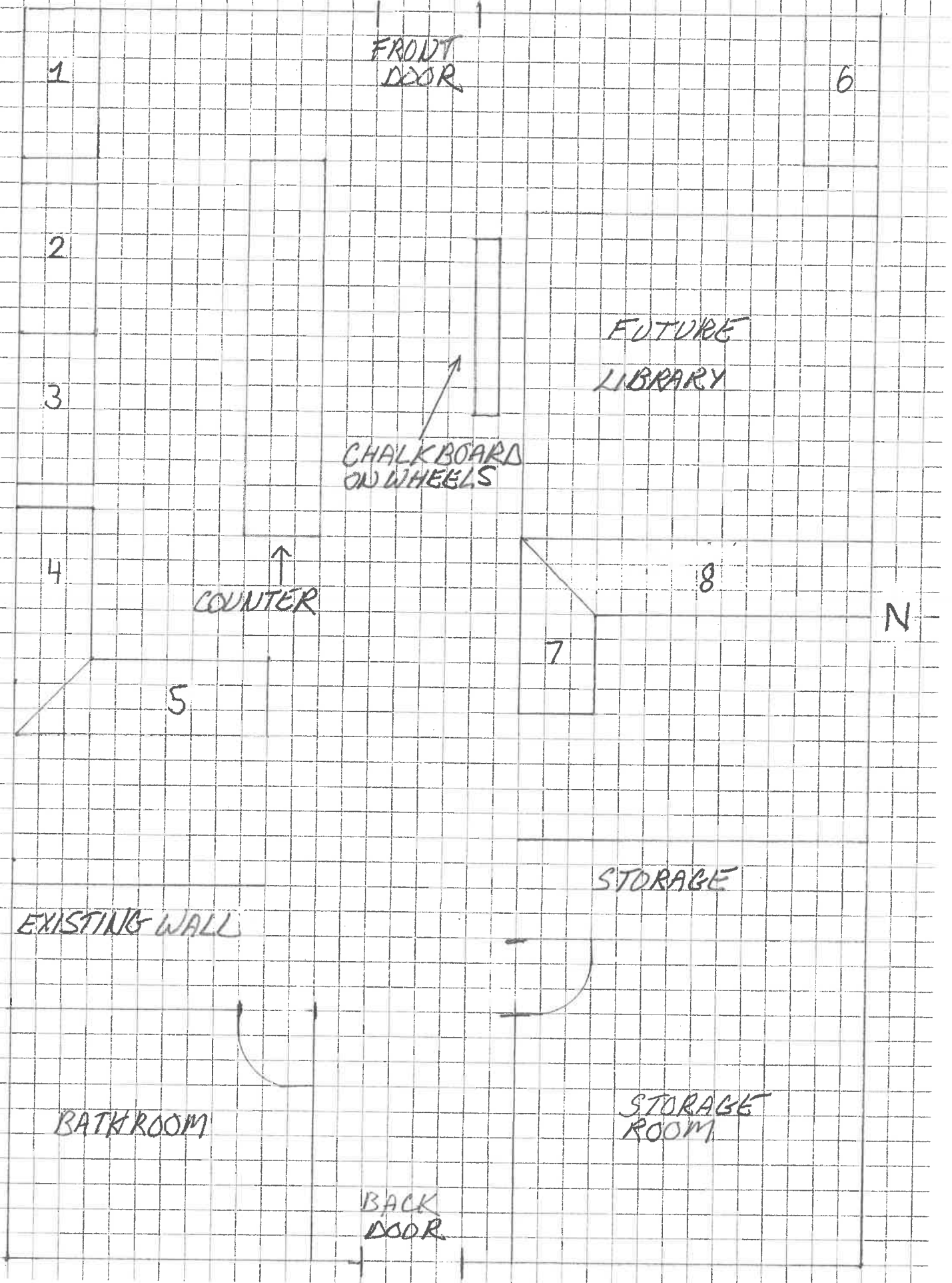
In closing, I wish to "plant a seed" in Guadalupe that will enhance the prosperity in this hard working community of migrant workers. Graduating a minimum of eighteen apprentices a year will be a great beginning insuring Guadalupe's well being and prosperity for future generations.

Overall, I very much appreciate the understanding and encouragement the City of Guadalupe has granted me. This endeavor will not be possible without it's help. Thank you very much.

Cordially,

A handwritten signature in blue ink, appearing to read "Ray Green". The signature is written in a cursive style with a large initial "R" and a long, sweeping underline.

EXISTING BLUP SIZE
* NOT TO SCALE



* NOT TO SCALE

→ PARKING

874

878

CITY
GAZEBO

POLE

PROPERTY LINES

POLE

POLE

POLE

WORK YARD

GATE

POLE

CONEX

MOBILE
WORK
TRAILER

DRIVEWAY

OLIVERA STREET

